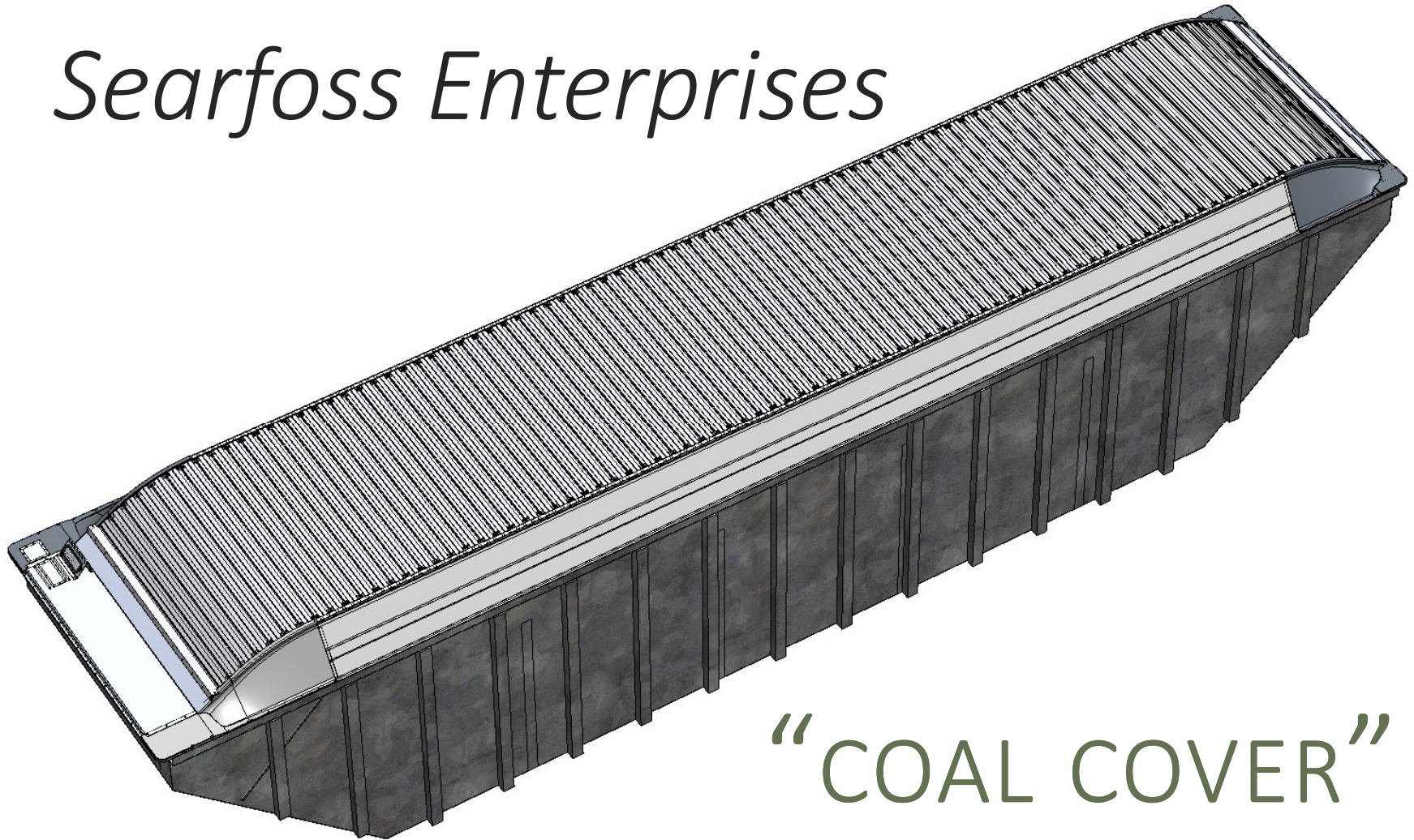


Searfoss Enterprises



“COAL COVER”

Searfoss Enterprises Coal Cover

“Automated Retractable Hard Top”

- * Does not protrude past the perimeter of the coal car anywhere.
- * Is designed to handle extreme vibration and twist.
- * Does not require modifications to the coal car.
- * Does not have a single weld in the entire system.
- * Has no metal on metal contact to gall or seize up.
- * Has no small roller bearings to seize up.
- * Has no flat channels to collect coal dust and water - ice etc. to jam things up.
- * Has ice scrapers for the hard top and track cleaners to clean the vertical tacks.
- * Air operation controlled by RF.
- * Requires no personnel or frame structures to open and close it.
- * Is compatible with current loading systems.
- * Is compatible with both rotary and bottom dump cars (extra brackets required for rotary cars.)
- * Will save fuel by making the cars more aero dynamic.
- * Eliminates pollution from lost coal and coal dust during transportation.
- * US Patent Application Publication No. 2016/0185362

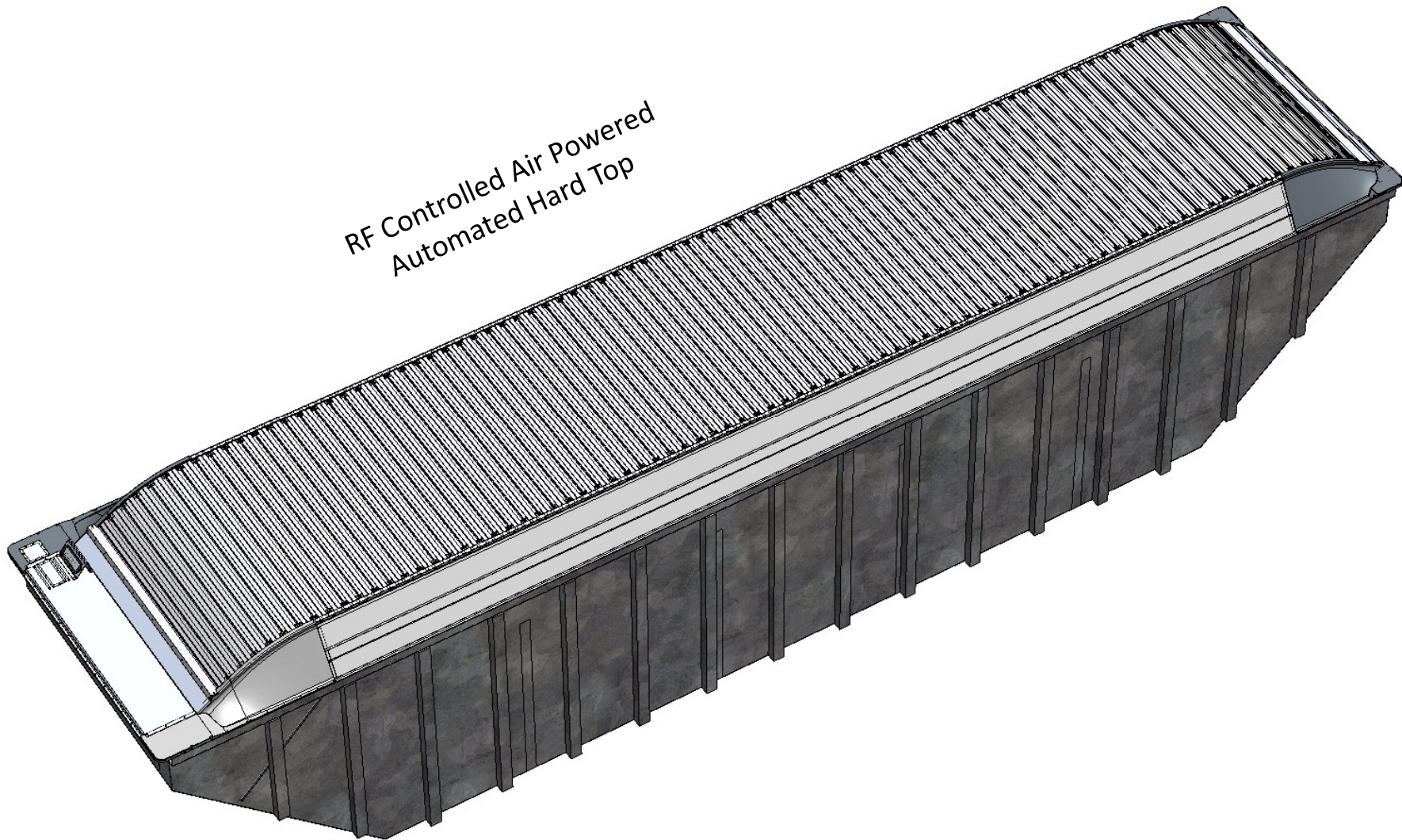
Searfoss Enterprises

Additional 20,000 Sq./Ft
Building site already prepped

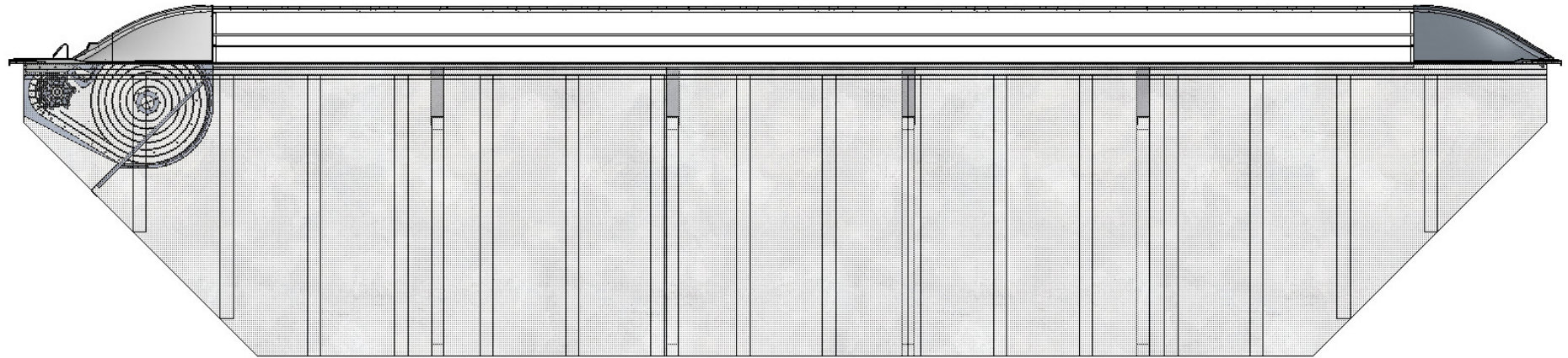
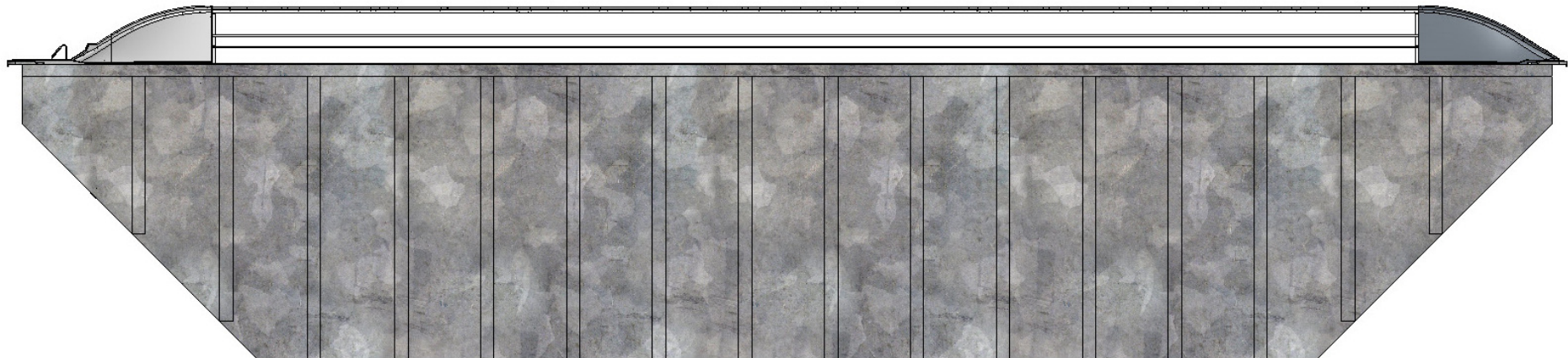


Dedicated 53,000 Sq./Ft Facility

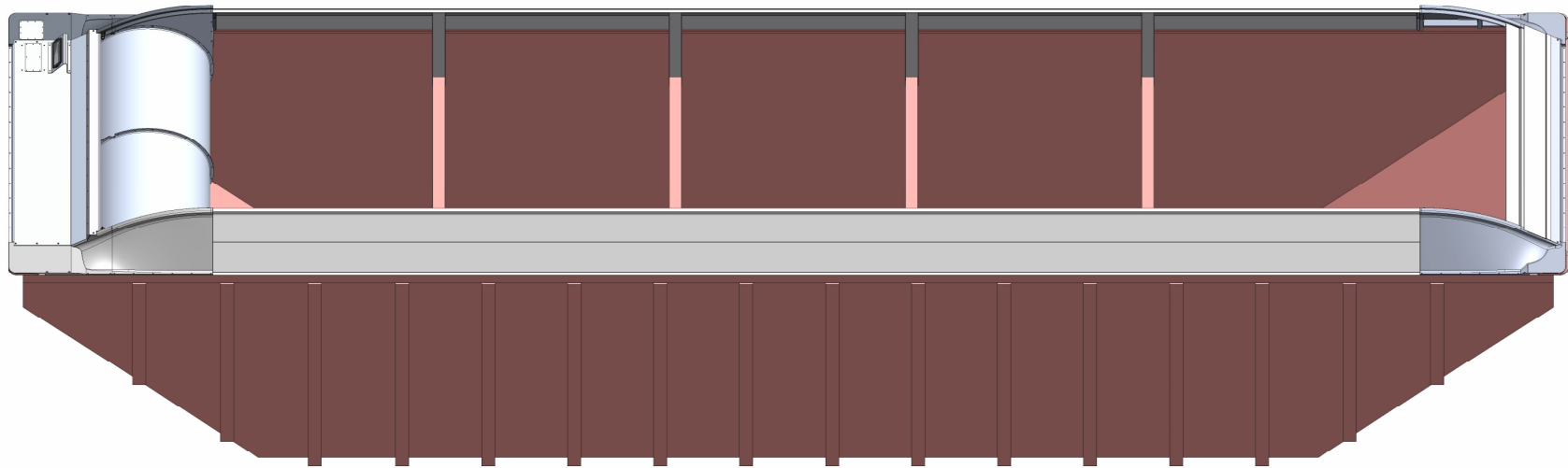
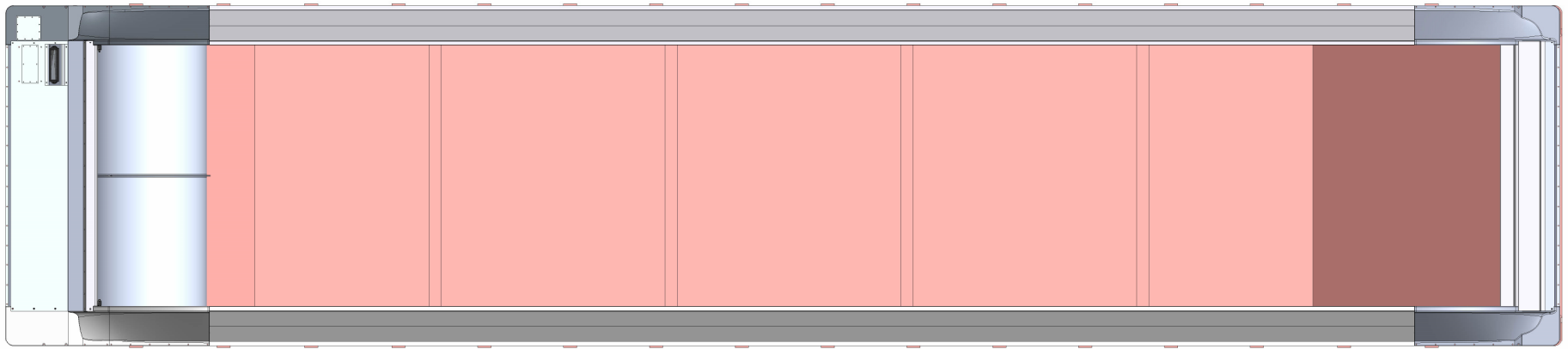
RF Controlled Air Powered
Automated Hard Top

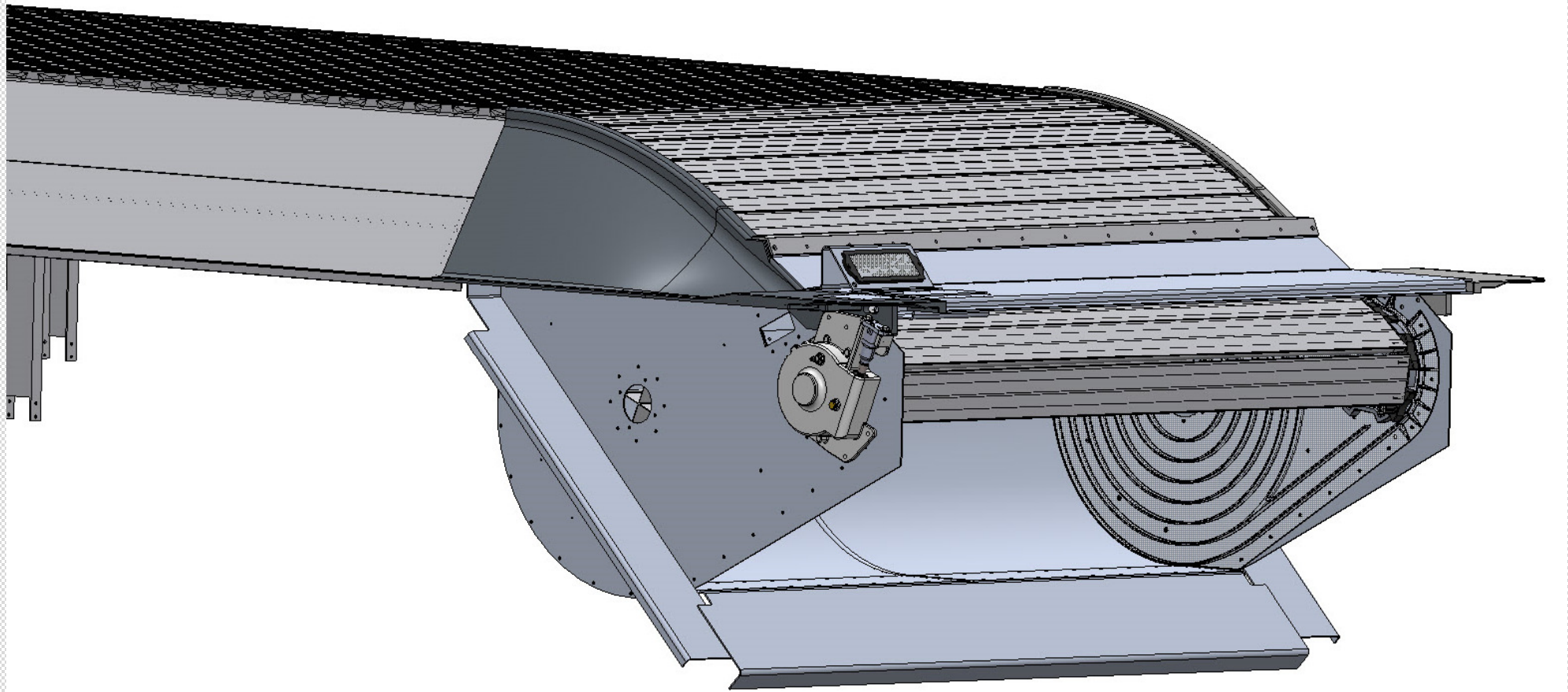


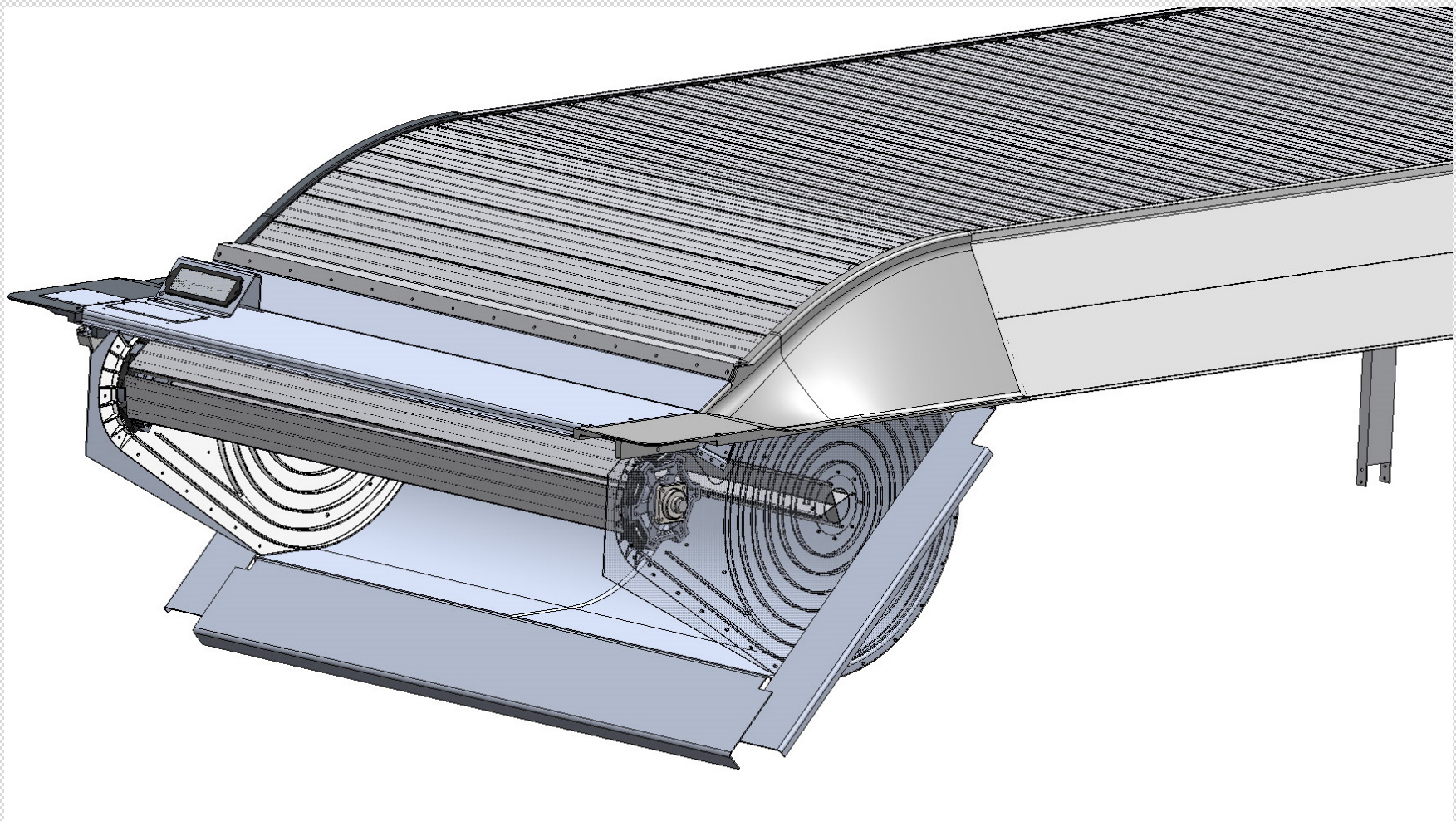
Only adds 22" of overall height while allowing for 19.5" of load heap above top rails of car

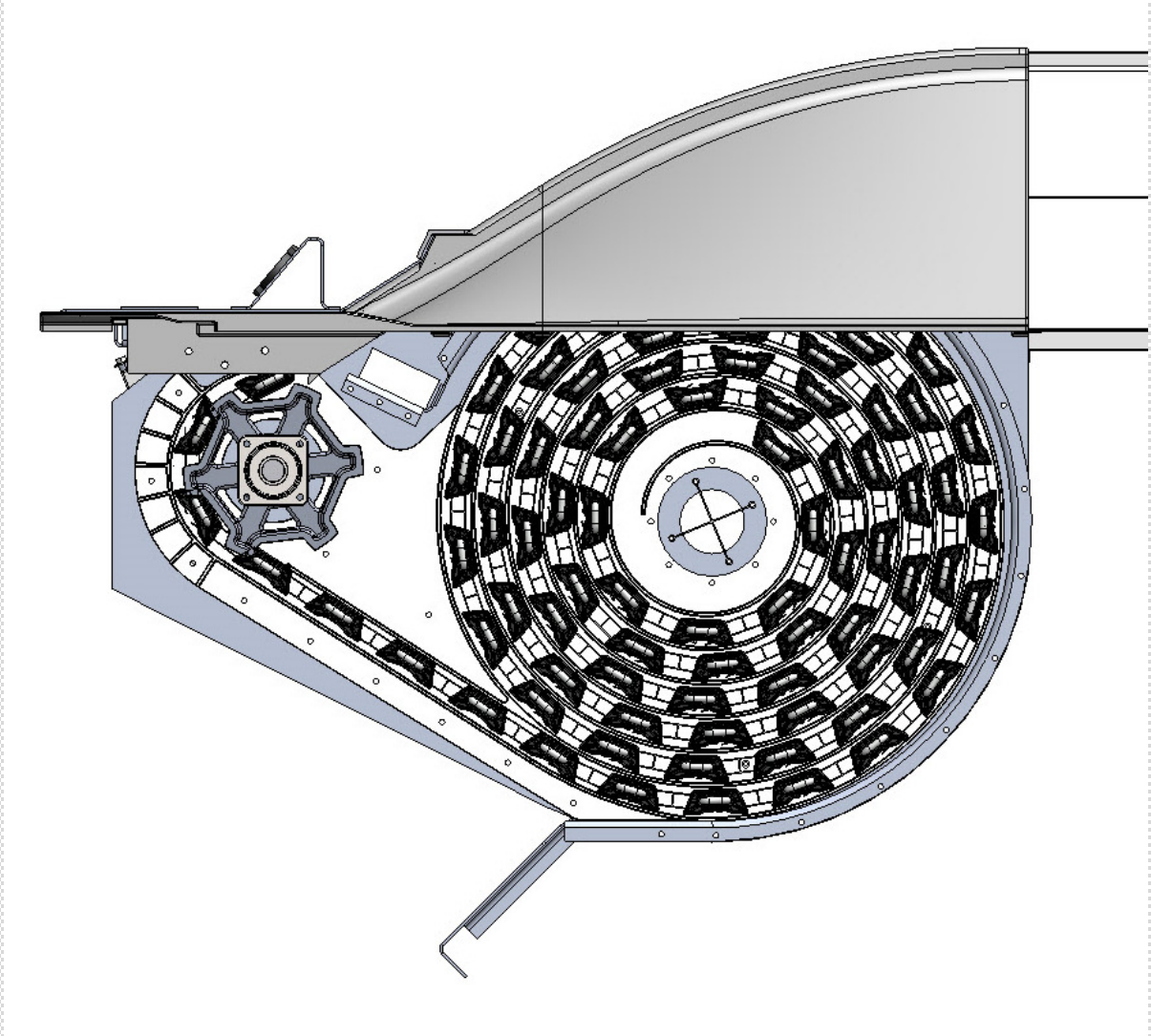


Leaves 98" Wide opening full length to accommodate loading shoots

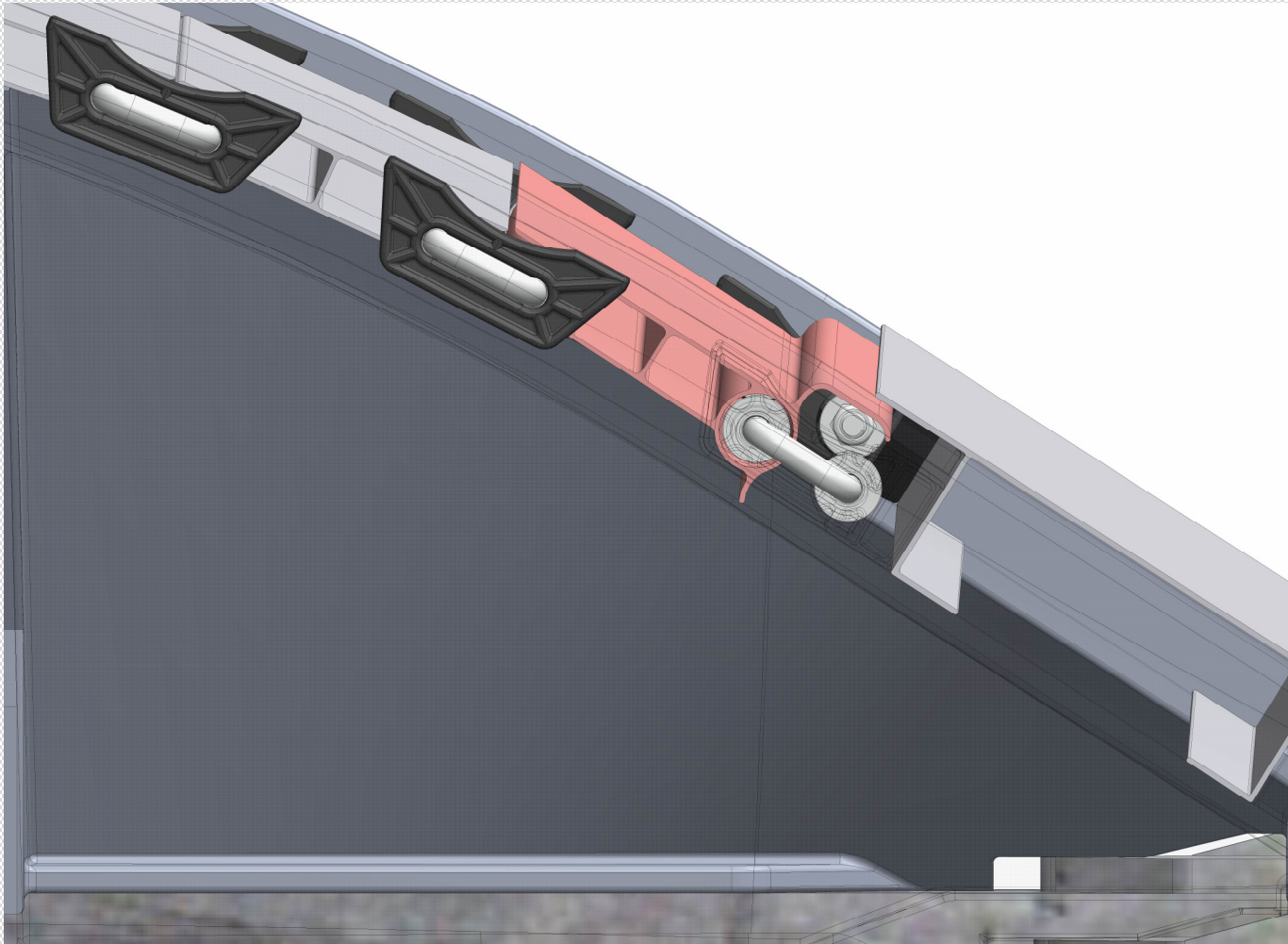


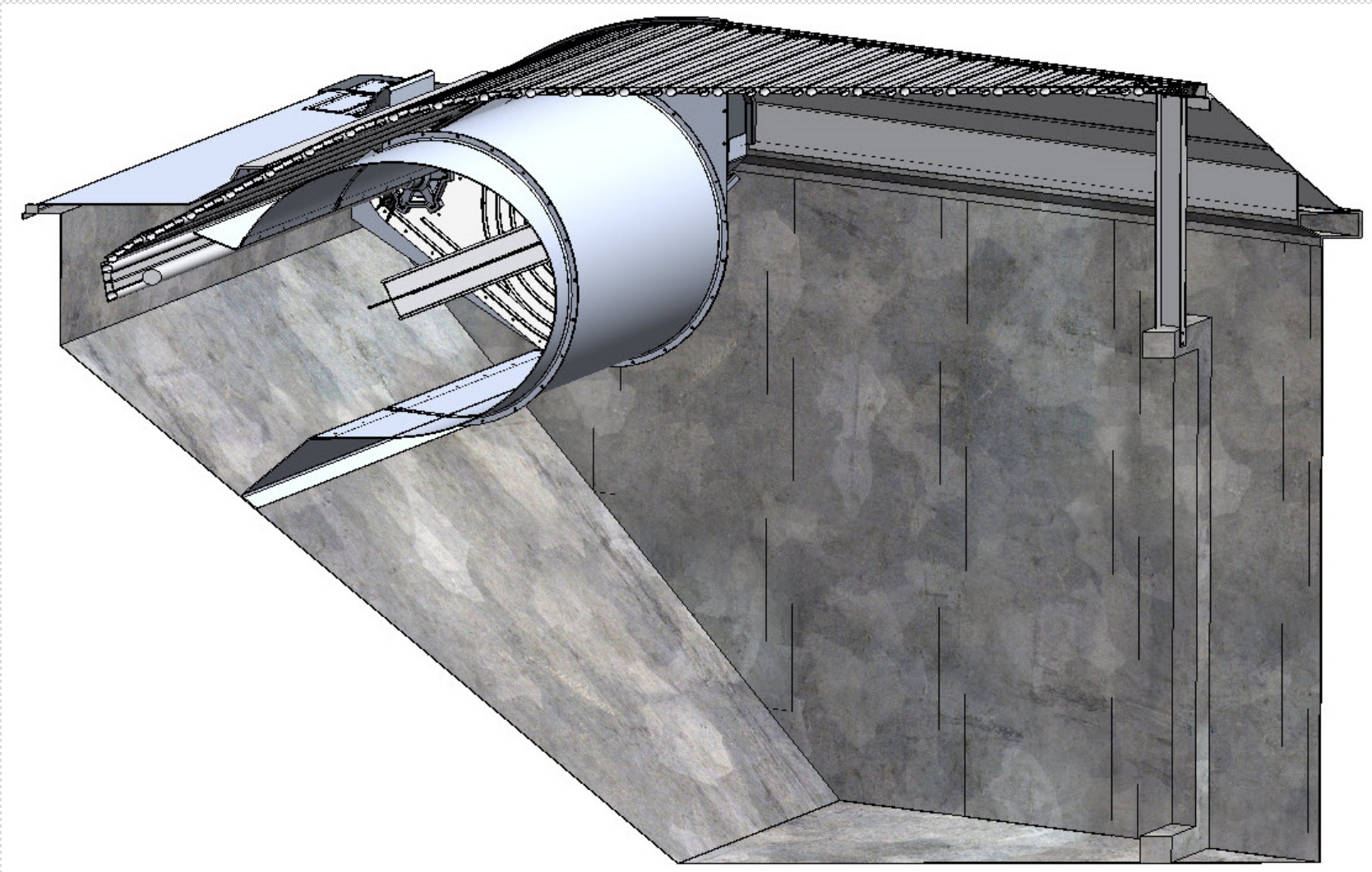


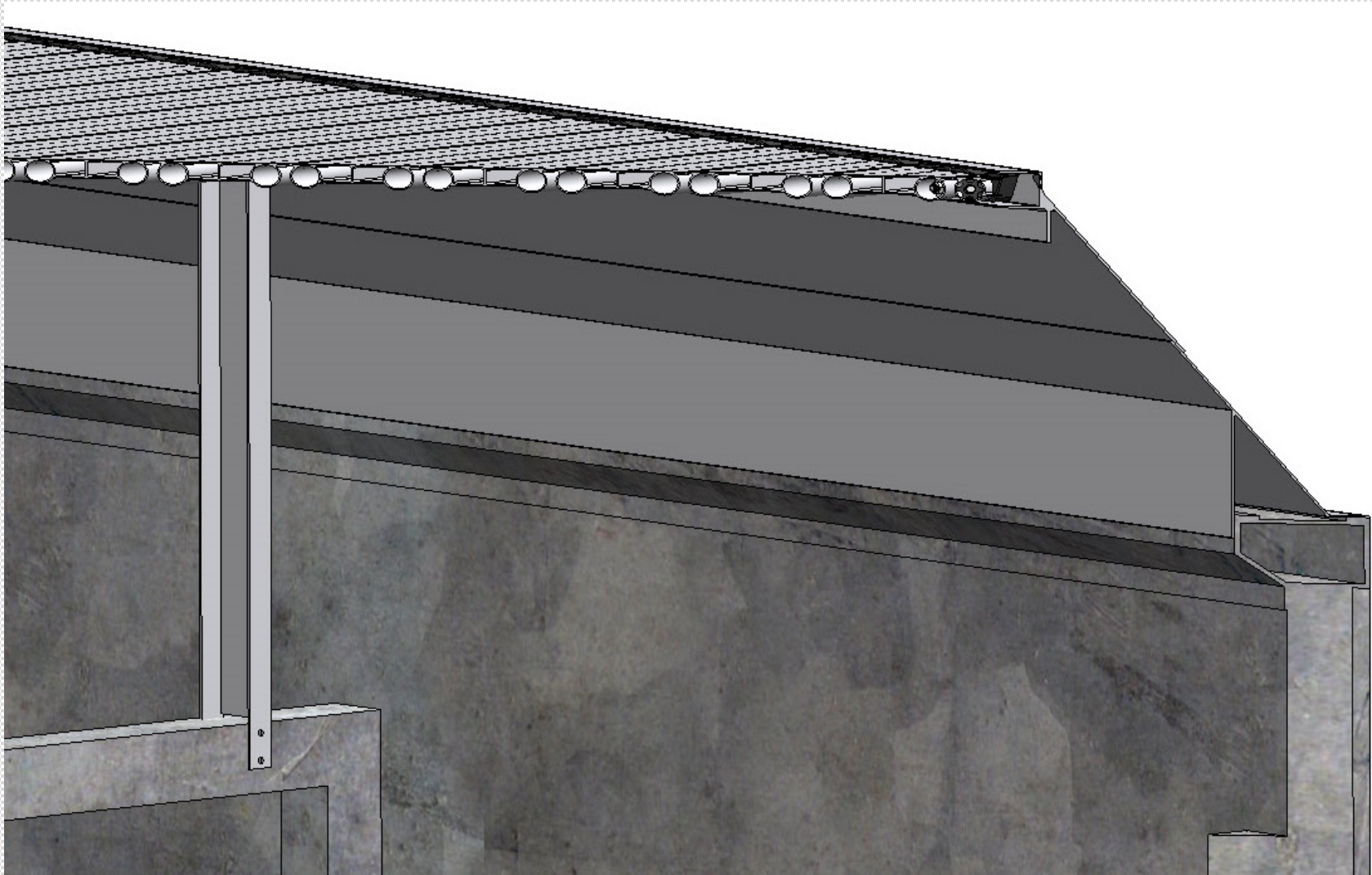


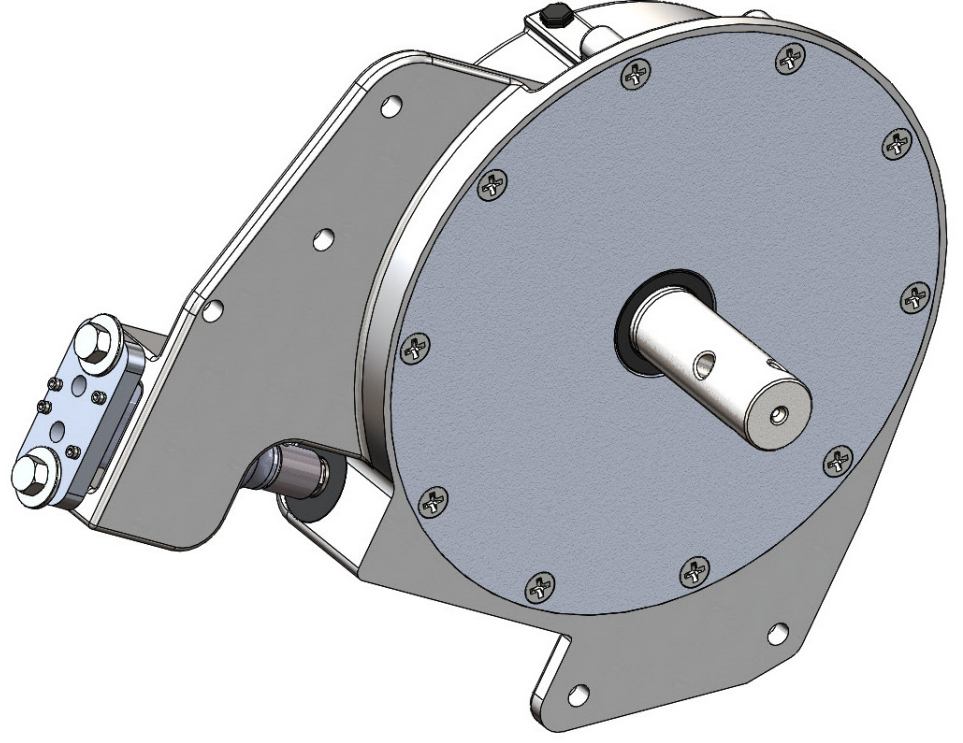
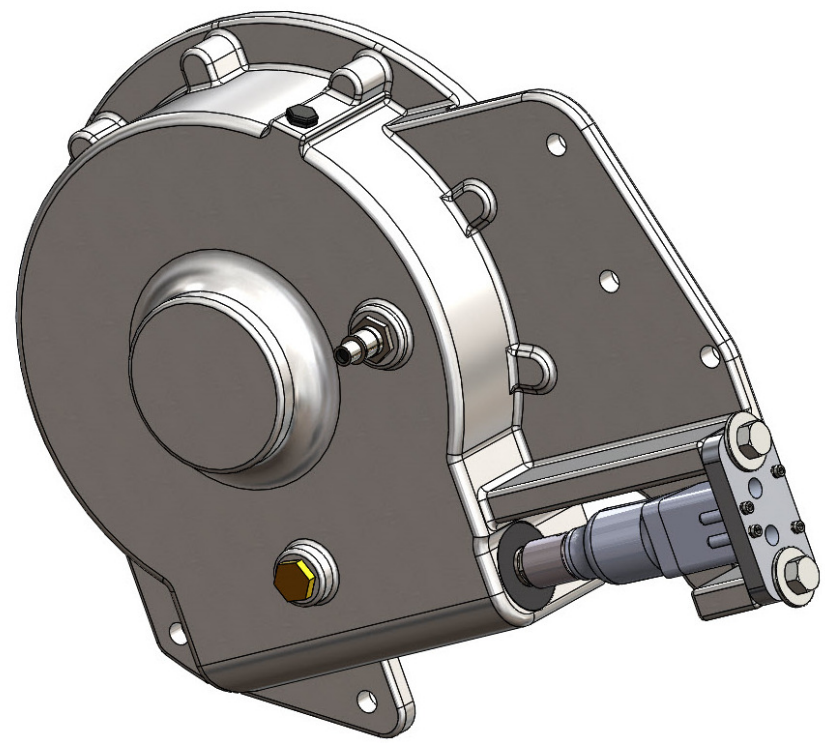
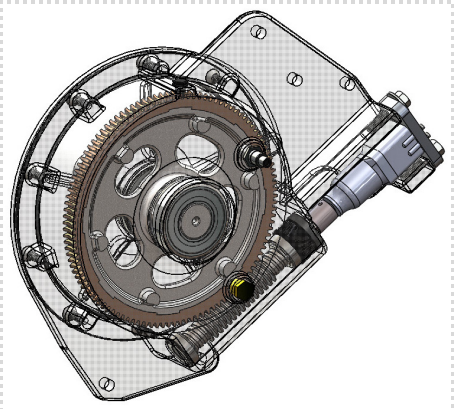
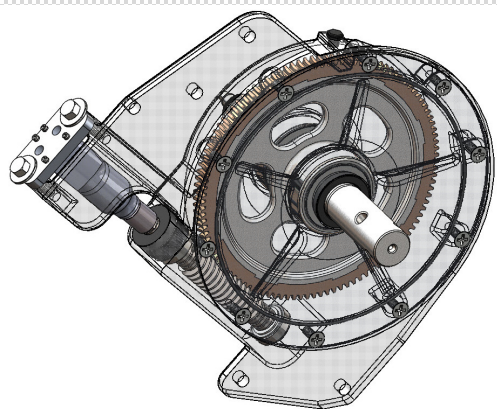
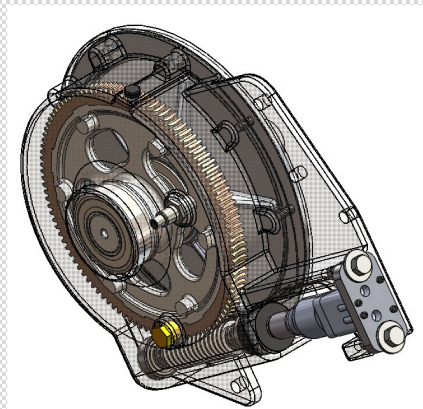


Lead Plow Panel tucks under splash guard for reduced wind drag.

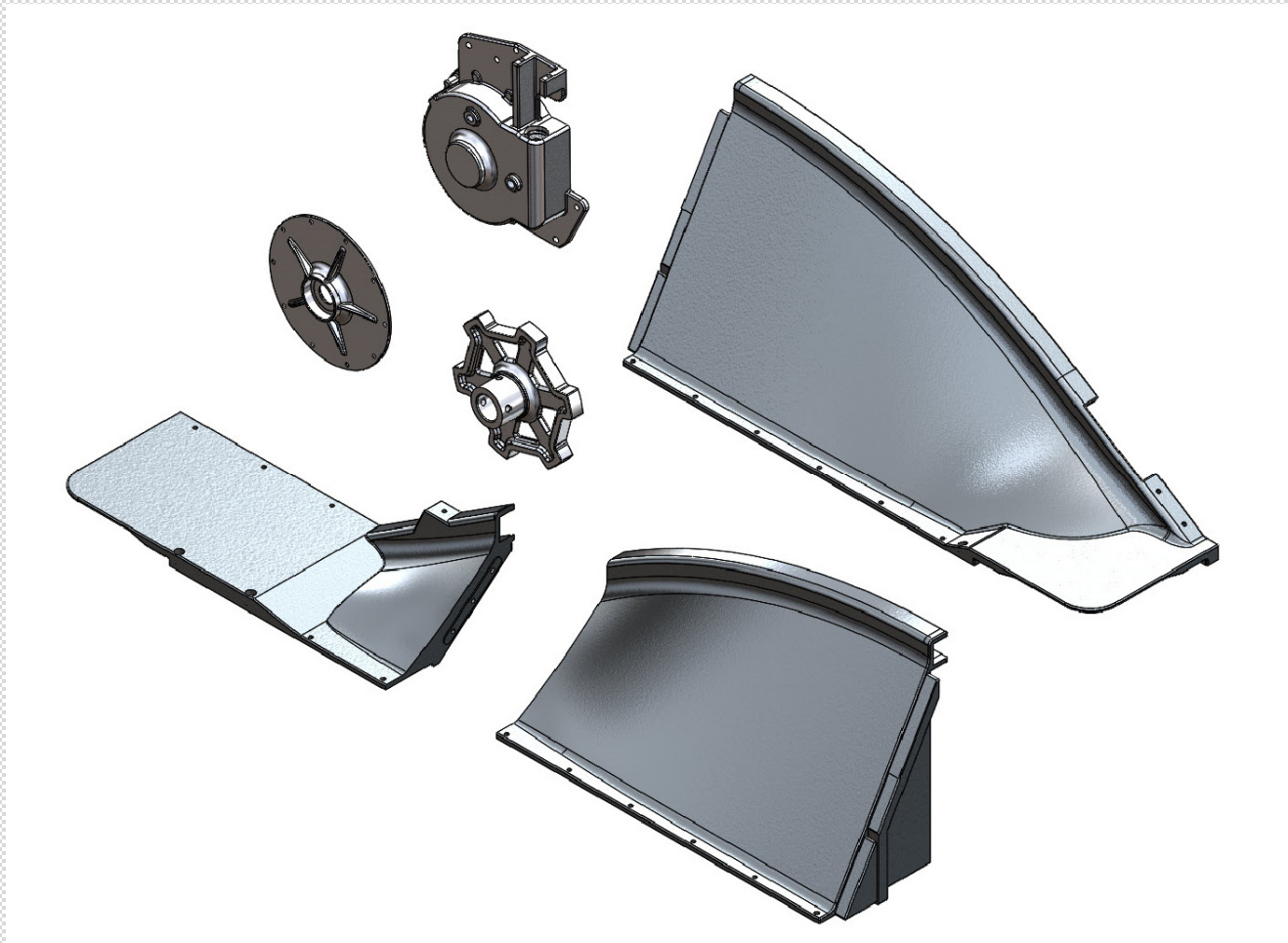




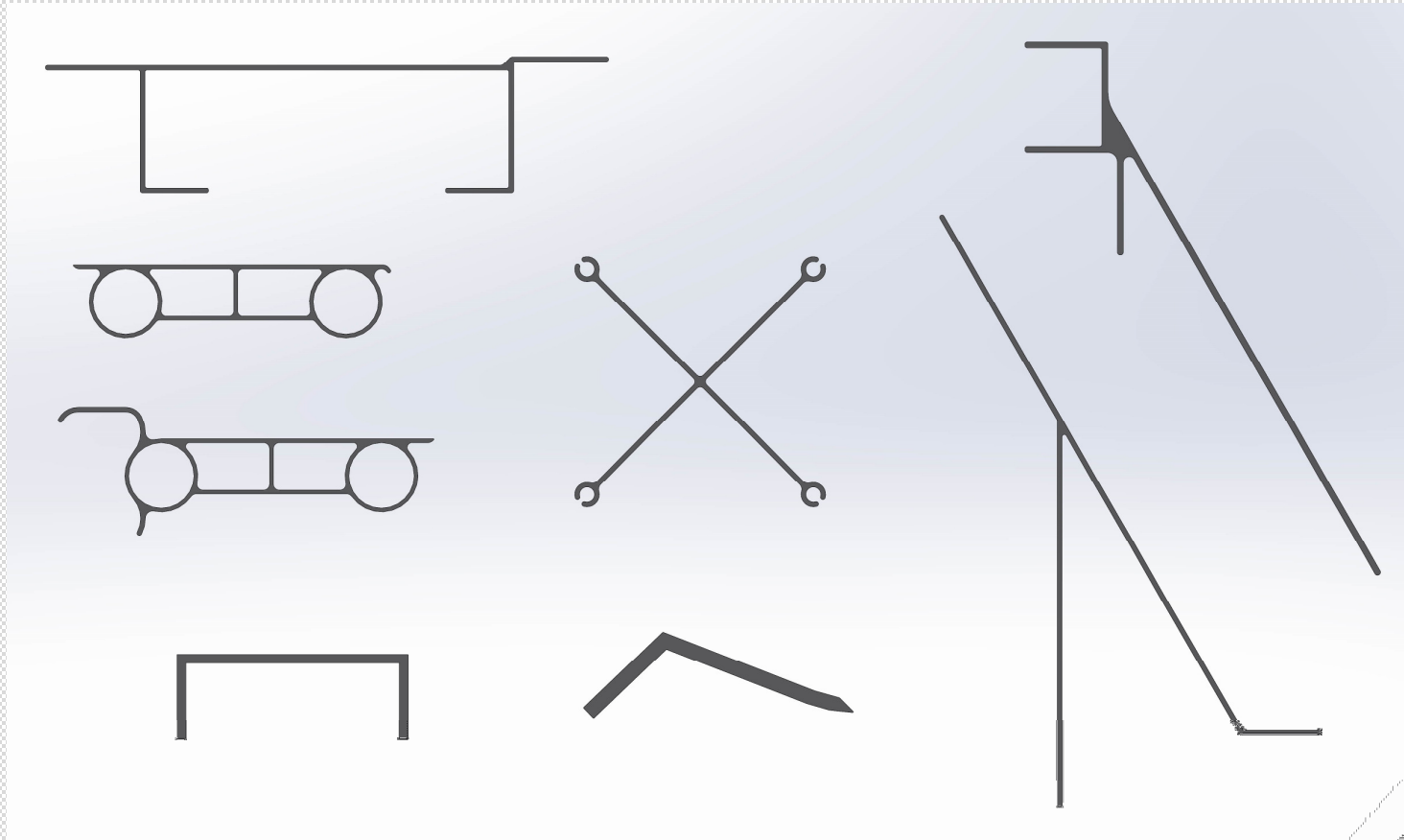




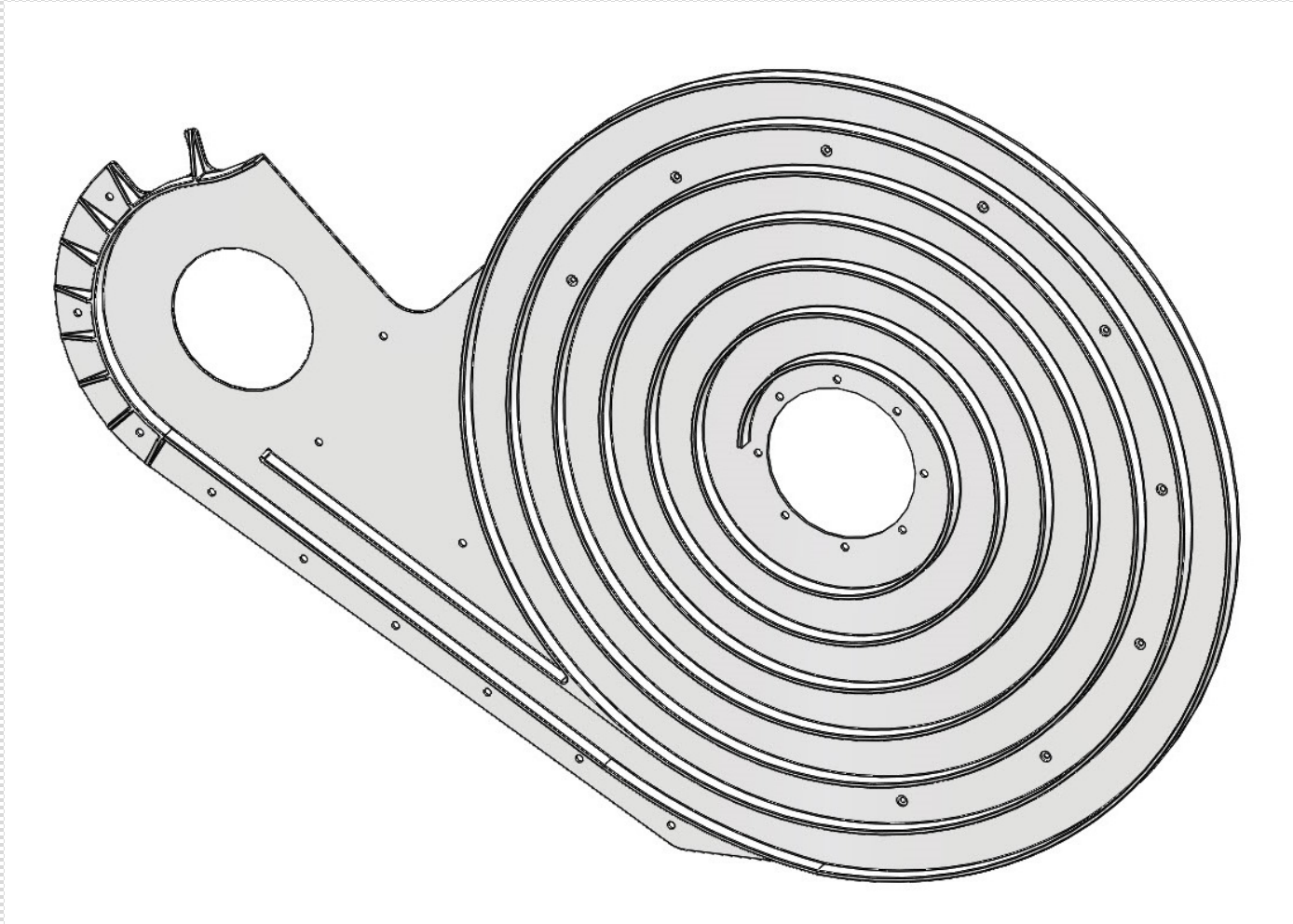
Some Examples of Aluminum Castings to be Tooled Up



Aluminum Extrusions to be Tooled Up



Poly Guide Plate to be Tooled Up in Left & Right Version



Poly Slide – Internally Reinforced with ½” U-Bolt

